

Forni A Vuoto

Vacuum furnaces - Vakuum-Öfen

Impianti speciali

Forni a vuoto orizzontali APWP

IT / Temperatura max 1350 °C. Pressione fino a 10 bar assoluti. Livello vuoto 10-3 mbar con opzione 10-5 mbar. Camera calda cilindrica in grafite/molibdeno. Motore ventola spegnimento ad alta pressione, comandato da inverter. Motore ventola riscaldamento in pressione, comandato da inverter. APPLICAZIONI: tempra e rinvenimento; solubilizzazione, distensione; sinterizzazione; sinterotempra ad alta temperatura; brasatura.

APWP Horizontal Vacuum Furnaces

EN / Temperature max. 1350 °C. Pressure until 10 absolute bars. Vacuum level 10-3 mbar with option 10-5 mbar. Warm Chamber Cylindrical in graphite / molybdenum. Motor ventilator for quenching high pressure, command with inverter. Motor ventilator heated in pressure, command with inverter. APPLICATION: Hardening And Recovery; Solubilization, Distension; Sintering; Sinter-Hardening At High; Temperature; Brazing.

APWP Horizontale Vakuumöfen

DE / Arbeitstemperatur max. 1350 °C. Abschreckdruck bis max. 10 bar absolut. Vakuumdruk 10-3 mbar, optional 10-5 mbar. Zylindrische Heizkammer mit Graphit/CFC- oder Molybdänblechauskleidung. Ventilatormotor für Hochdruck-Gasdruckabschreckung, durch Frequenzumrichter gesteuert. Konvektionsmotor, durch Frequenzumrichter gesteuert. NENNUNGEN: Härten und Anlassen; Lösungsglühen und Entspannungsglühen; Sintern; Sintern bei Hochtemperatur; Löten.

TECH DATA / DATI TECNICI / TECH DATEN

TYPE	DIMENSIONS (W x L x H)	POWER	CHARGE
APWP 4-4-6	400 X 400 X 600 mm	80 kW	300 kg
APWP 6-6-9	600 X 600 X 900 mm	130 kW	600 kg
APWP 9-8-12	900 X 800 X 1200 mm	240 kW	1000 kg
APWP 10-10-15	1000 X 1000 X 1500 mm	490 kW	2000 kg
APWP 12-12-18	1200 X 1200 X 1800 mm	650 kW	3000 kg

The data shown in the table are purely indicative and may be subject to revision.

Forni a vuoto per cementazione in bassa pressione A-LPC+A-HPQ

IT / Temperatura max 1250 °C. Pressione convezione fino a 1,5 bar assoluti. Livello vuoto 10-3 mbar. Camera calda cilindrica in grafite. CAMERE DI SPEGNIMENTO IN ALTA PRESSIONE MODELLO A-HPQ: Pressione di spegnimento fino a 20 bar assoluti. Livello vuoto 10-3 mbar. APPLICAZIONI A-LPC + A-HPQ: Cementazione in bassa pressione; Tempra e rinvenimento, Solubilizzazione, distensione; Sinterizzazione; Sinterotempra ad alta temperatura; Brasatura.

A-LPC+A-HPQ Low Pressure Carburizing Vacuum Furnaces

EN / Temperature max. 1250 °C. Pressure convection until 1,5 absolute bars. Vacuum level 10-3 m Bar. Warm Chamber Cylindrical in graphite. QUENCHING CHAMBER IN HIGH PRESSURE: Pressure of quenching until 20 absolute bars. Vacuum level 10-3 mbar. APPLICATION A-LPC + A-HPQ: Low pressure carburizing; Hardening and tempering; Solubilization, annealing; Sintering; Sinterhardening at high temperature; Brazing.

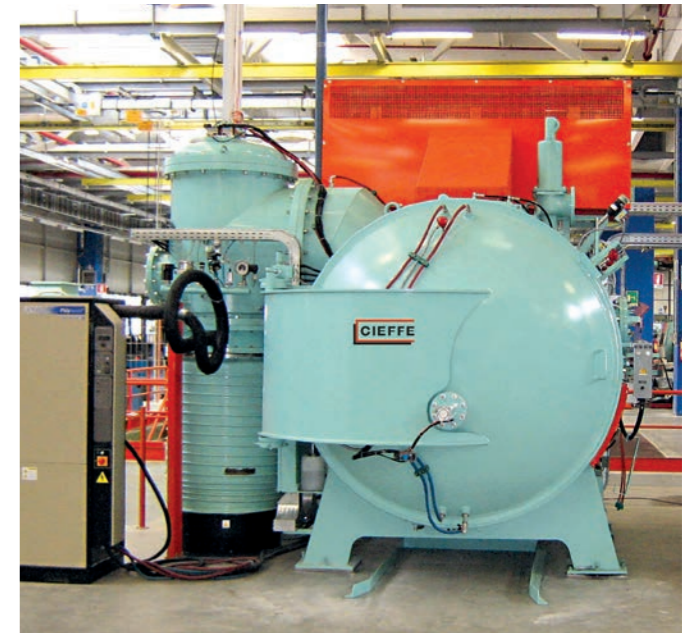
A-LPC+A-HPQ Niederdruck Aufkohlungs-Vakuumöfen

DE / Arbeitstemperatur max. 1250 °C. Konvektionsdruck bis zu 1,5 bar absolut. Vakuumdruk 10-3 mbar. Zylindrische Heizkammer mit Graphitauskleidung. OCHDRUCKGASABSCHRECKKAMMER: Abschreckdruck bis max. 20 bar absolut. Vakuumdruk 10-3 mbar. ANWENDUNGEN DER MODULE A-LPC + A-HPQ: Einsatzhärtung unter Niedrigdruck; Härten und Anlassen; Lösungsglühen, Entspannungsglühen; Sintern; Sintern bei Hochtemperatur; Löten

TECH DATA / DATI TECNICI / TECH DATEN

TYPE	DIMENSIONS (W x L x H)	POWER	CHARGE
A-LPC 4-4-6	400 X 400 X 600 mm	80 kW	300 kg
A-HPQ 4-4-6	400 X 400 X 600 mm	150 kW	300 kg
A-LPC 6-6-9	600 X 600 X 900 mm	130 kW	600 kg
A-HPQ 6-6-9	600 X 600 X 900 mm	250 kW	600 kg
A-LPC 9-8-12	900 X 800 X 1200 mm	240 kW	1200 kg
A-HPQ 9-8-12	900 X 800 X 1200 mm	350 kW	1200 kg

The data shown in the table are purely indicative and may be subject to revision.



Forni a vuoto verticali

IT / Temperatura max 1350 °C: Pressione fino a 10 bar assoluti. Livello vuoto 10-3 mbar con opzione 10-5 mbar. Camera calda cilindrica in grafite/molibdeno. Motore ventola spegnimento ad alta pressione, comandato da inverter. Motore ventola riscaldamento in pressione, comandato da inverter. APPLICAZIONI: tempra e rinvenimento; solubilizzazione, distensione; sinterizzazione; sinterotempra ad alta temperatura; brasatura.

Vertical Vacuum Furnaces

EN / Temperature max. 1350 °C. Pressure until 10 absolute bars. Vacuum level 10-3 mbar with option 10-5. Warm Chamber Cylindrical in graphite / molybdenum. Motor ventilator for quenching high pressure, command with inverter. Motor ventilator heated in pressure, command with inverter. APPLICATION: Hardening And Tempering; Solubilization, Annealing; Sintering; Sinter-hardening at high temperature; Brazing.

Vertikale Vakuumöfen

DE / Arbeitstemperatur max. 1350 °C. Abschreckdruck bis max. 10 bar absolut. Vakuumdruk 10-3 mbar, optional 10-5 mbar. Zylindrische Heizkammer mit Graphit/CFC- oder Molybdänblechauskleidung. Ventilatormotor für Hochdruck-Gasdruckabschreckung, durch Frequenzumrichter gesteuert. Konvektionsmotor, durch Frequenzumrichter gesteuert. ANWENDUNGEN: Härten und Anlassen; Lösungsglühen und Entspannungsglühen; Sintern; Sintern bei Hochtemperatur; Löten.

TECH DATA / DATI TECNICI / TECH DATEN

TYPE	DIMENSIONS (W x L x H)	POWER	CHARGE
A-VVBLF 9-9	900 X 900 mm	150 kW	500 kg
A-VVBLF 13-12	1300 X 1200 mm	280 kW	1000 kg
A-VVBLF 15-15	1500 X 1500 mm	570 kW	1800 kg
A-VVBLF 18-18	1800 X 1800 mm	720 kW	3000 kg

The data shown in the table are purely indicative and may be subject to revision.